

Shotley Pier Update – Time for You to Decide December 2018

Apologies that the previous newsletter had some big white spaces, a formatting problem occurred. We are working on a new solution and hope this newsletter is not affected!

Unsurprisingly, the plans for the pier proved to be the main topic of debate at the AGM. The original plans met with a somewhat mixed review and prompted one of our investors, John Bowen and a Director, Barrie Powell, to completely re-think the design of the proposed buildings on the pier. The Board considered this new approach favourably and agreed that they should be made available at the AGM where Barrie and John presented their ideas, rationale and drawings. The revised plans were very well received by the attending investors.

Two similarly sized buildings at the shore end of the pier would be built on a platform on either side of the pier. One to house the visitor centre and the other a workshop. Subsequent to the meeting, some refinements have been made due to functional considerations. The original planned buildings and footprint of the new design are shown below.

In addition to the views of the Board and investors, the local populace and businesses have also been canvassed and the response has been similarly supportive to the new approach.

The main areas of compromise at this point:

- Reduce the height and width of the buildings
- Reduce the overall length of the Visitor Centre by removing some tables and chairs, reduce the number of toilets, and remove the office

The Board of Directors agreed three important principles at the outset:

Keep the Pier Clear for walking on. Group activities such as drawing and painting, photography or other leisure activity such as angling, need to take place on a platform because the pier is not wide enough for groups of people to take up room with stationary activities. We will not build on the pier, only alongside it.

Step-free access to welcome people with mobility problems and parents with pushchairs. Selecting a design with a very gentle slope ensures access for all.

Free entry to the pier so that anyone can stroll along it without paying an entry fee.

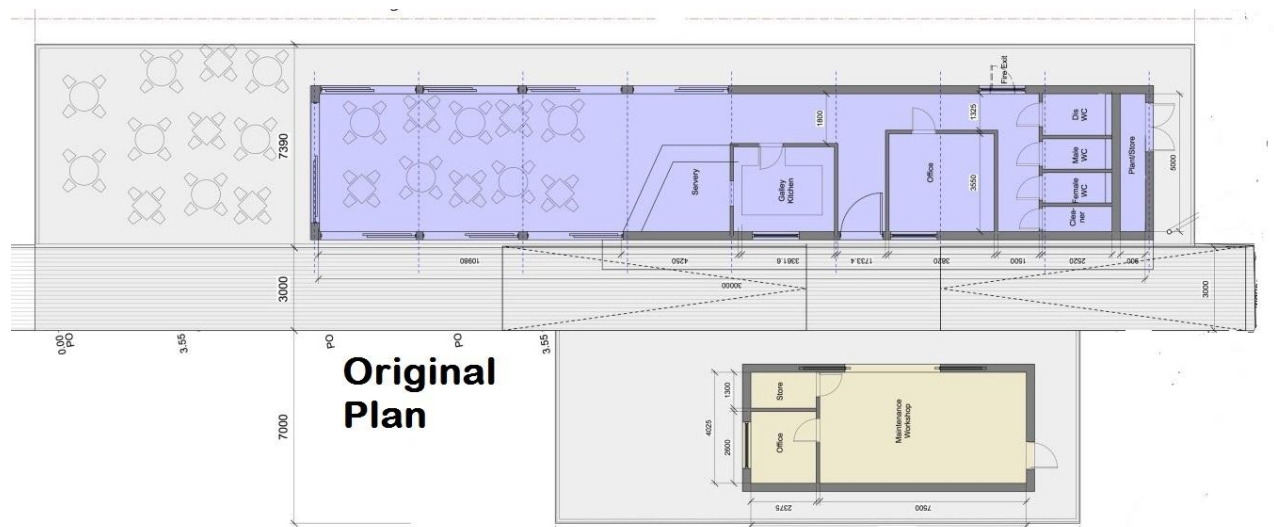
We ask investors to vote for one of the four roof designs, see the images below labelled Option 1, Option 2, Option 3 and Option 4.

If voting by email: send your message to shotleypier@gmail.com. State which option you prefer, and any other comments you would like to make, by 5/1/19.

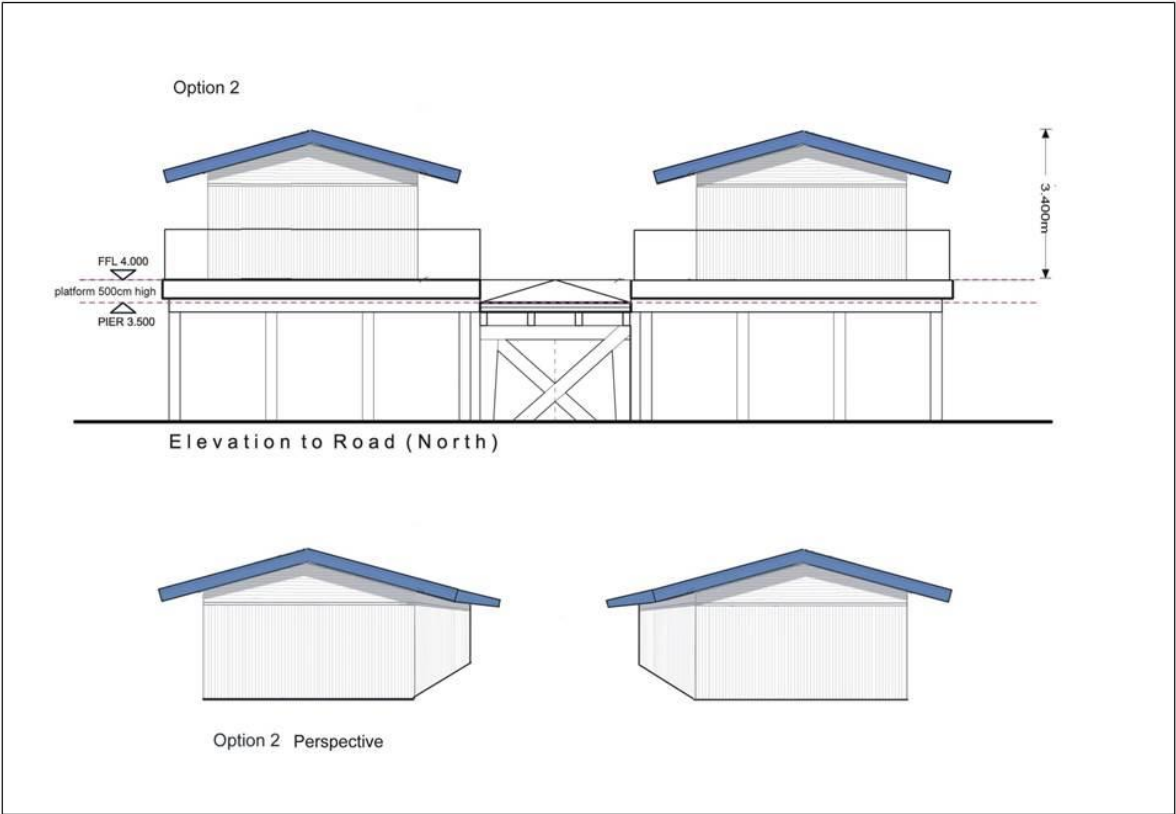
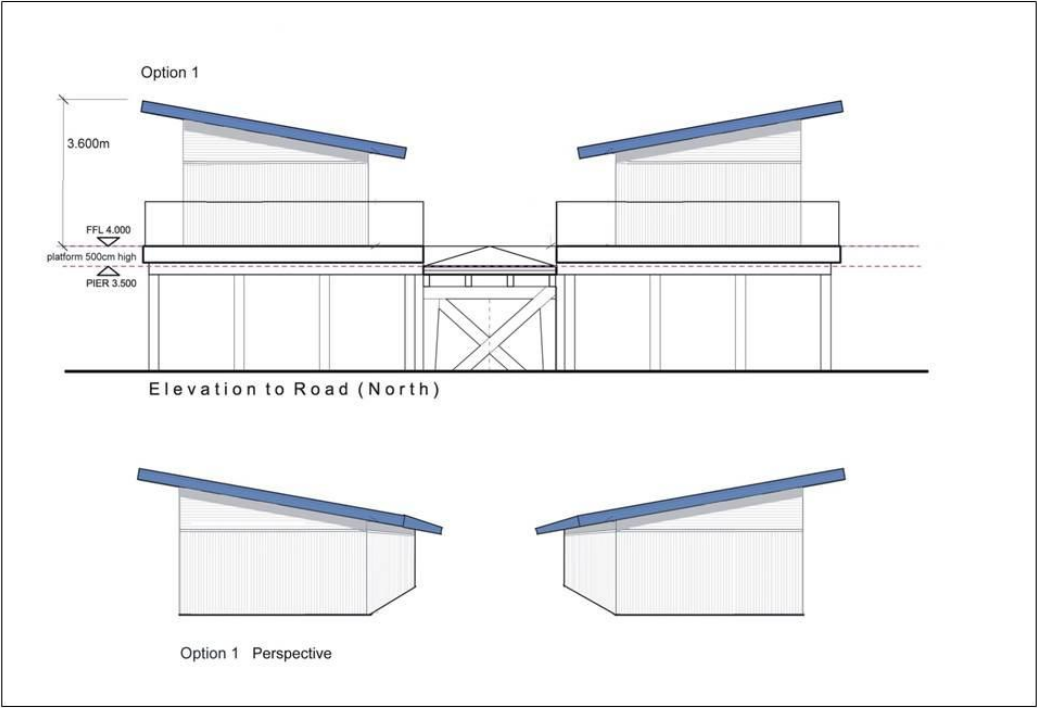
If voting by post: please send a note, or circle your choice and send back the page to our registered office: Redlands, Main Road, Chelmondiston, IP9 1DX, this will need to arrive by 5/1/19.

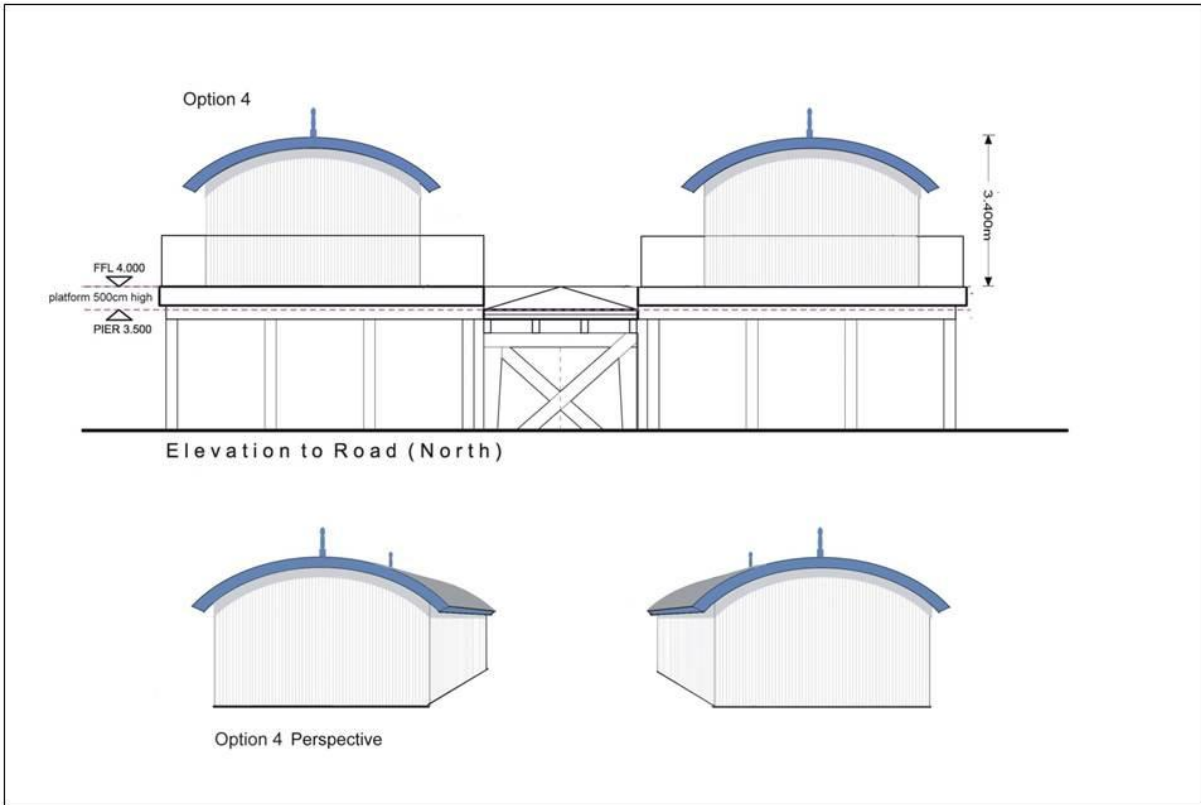
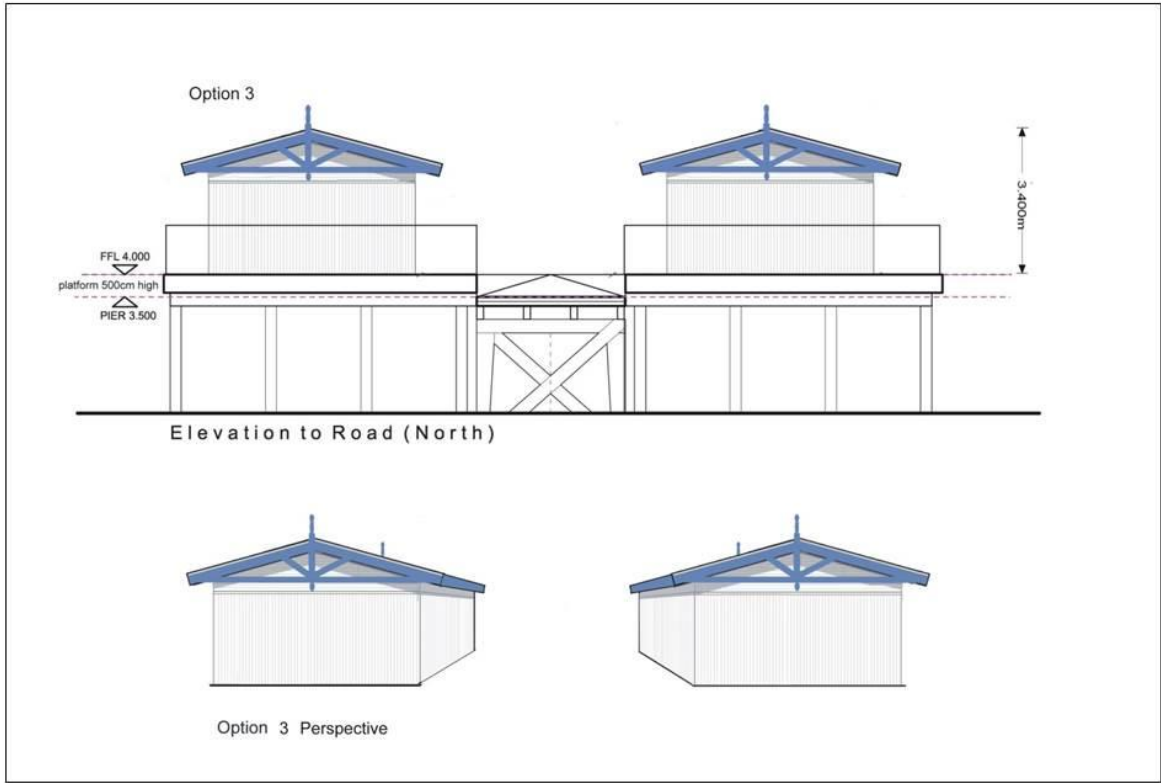
If voting by text message: If you haven't already done so, give us your mobile phone number by 30th December 2018, you can do this by emailing shotleypier@gmail.com or phone

All four choices will have the same layout, although this has not yet been finalised, your comments on the new layout are welcome:



Roof Styles: Options 1 - 4





The Board would like to take this opportunity to wish you all a very happy and peaceful Christmas. A huge thank you to all the volunteers who help the pier group through the year.

All this information is going to be placed on our website and on social media, so if you wish to see larger images, see www.shotleypier.co.uk

Shotley Heritage Charitable Community Benefit Society Ltd
www.shotleypier.co.uk

Facebook: ShotleyPier
Twitter: Shotley Pier
Youtube Channel: Shotley Pier