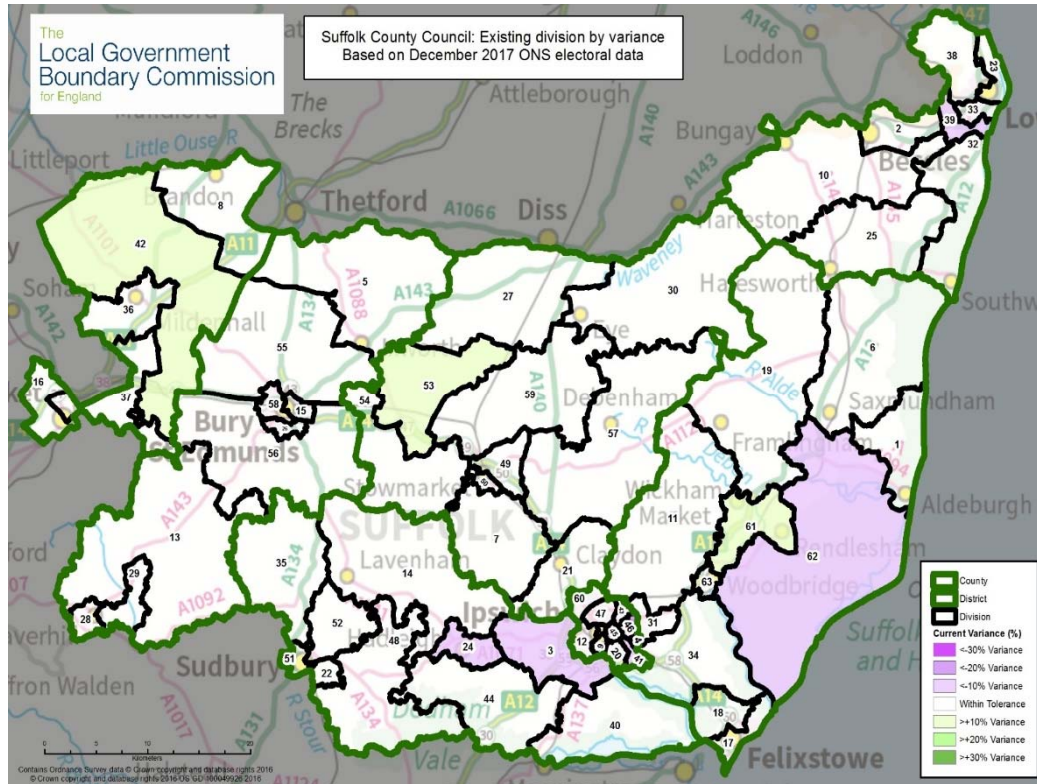


Suffolk County Council Electoral Review Parish and Town Council Briefing



Suffolk
County Council



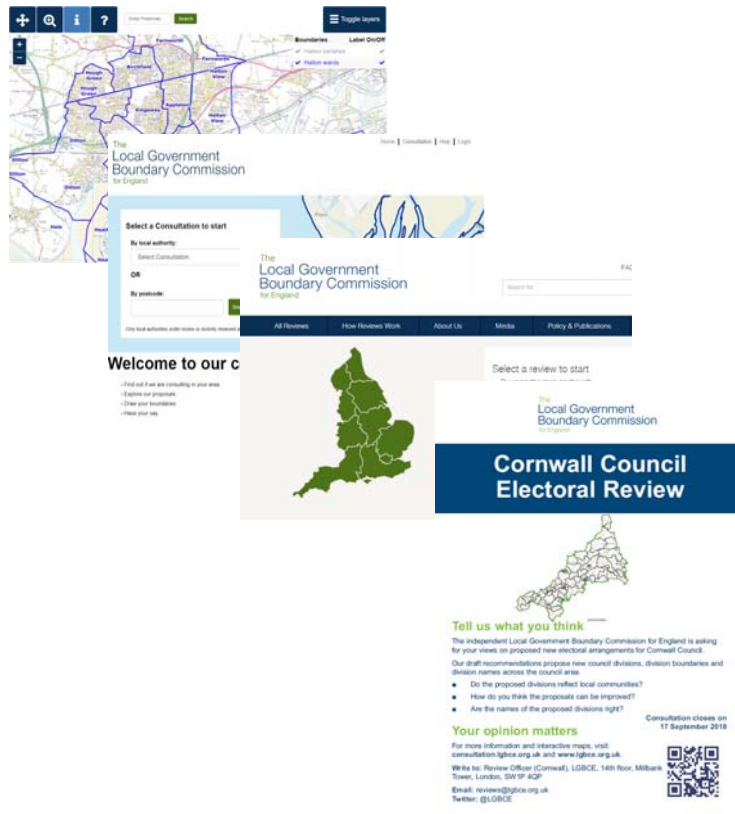
Why Suffolk?

This review will address the poor levels of electoral equality in Suffolk

What does an Electoral Review Determine?

1. Total number of councillors
2. Total number of divisions
3. Division boundaries
4. Number of councillors elected to each division
5. Names of each division

Making a difference



- Get involved.
- Help shape your council for the long term.
- Help us make it a transparent & consultative process.
- Help influence & encourage.

Local knowledge is invaluable to this process.

Division Patterns

Effective representations will address:

Electoral
equality for
voters

Community
identities and
interests

Effective and
convenient local
government

When?

- Consultation on division patterns: *24 September 2019 to 2 December 2019*
- Consultation on draft recommendations: *3 March 2020 to 11 May 2020*

Community Identity

- Parishes & neighbourhood groups as building blocks
- Facilities and amenities
- Landmarks
- Transport

Making a submission

The
Local Government
Boundary Commission
for England

“The two Parish Councils here are in the final stages of producing a joint Kibworths Neighbourhood Plan. It is therefore logical that the new proposed name covering these two parishes reflects the community going forward, i.e. Kibworths ward”

– Kibworth Harcourt Parish Council

“They go to different secondary schools, have different community centres and focal points, have different bus routes, different youth clubs, different parks – so there is a real north/south split reflected in strong community identities”

- Yate Town Council

“This area is on a hill and is best located within the Thornton Heath ward, rather than in South Norwood. Despite fronting onto South Norwood Hill, this is a major road barrier (the A215), which is difficult to cross”

- Thornton Heath Neighbourhood Association

Parishes

- We cannot create or abolish parishes, or amend their boundaries
- If we divide a parish between divisions, we must create parish wards
- We can change parish electoral arrangements only as a direct consequence of our division proposals

Review Timeline



Getting in touch

- **Make a submission:** consultation.lgbce.org.uk
- **Website:** www.lgbce.org.uk
- **Email:** reviews@lgbce.org.uk
- **Write:** Review Officer (Suffolk)
1st Floor, Windsor House
50 Victoria Street
London, SW1H 0TL
- **Social media:** @LGBCE