



SHOTLEY PARISH COUNCIL
Update - February 2019

Ganges Development: Work on the site continues in earnest, with a number of planning conditions being discharged. We would like to take this opportunity to thank the developers for acquiescing to our Chairman's request to gift to the parish a Victorian street light from the site, which many years ago lit a pelican crossing. This light is currently being restored in order to be re-sited at the Shotley Village Hall car park, where we hope it will serve as a wonderful memory of Ganges and its association with the village. This is in addition to the Parish Council's £200 contribution towards the project.



Lloyd Road and Kingsland Open Spaces

In readiness for the warm weather and fast approaching half-term, we will be carrying out extensive tree works to both areas and repairing/cleaning the tennis courts. This will be at a cost of just over £3,000 each but should make a real difference to the amenities.

Heritage Park: Work is planned to extend the fire break near the Estuary Road footpath which started in 2018, in an effort to protect neighbouring properties from the risk of fire and in line with our Insurer's requirements. Paths/verges will also be maintained with the much appreciated help of the Community Payback Team, at no cost to the Council.

Allotments: Following the positive feedback received to a public consultation, a bollard will be installed at the entrance to the allotments on The Street, which is expected to stop any unlawful/unauthorised access to the site. We hope this will be viewed as a welcomed security measure by the neighbouring properties.

Footpath between East View Terrace and Shotley Primary School: As regular maintenance is no longer expected to be carried out by SCC, the Parish Council has taken a view that this is an extremely important area that should be maintained clear and safe and therefore will be paying for its maintenance whenever possible. Work should commence in the next few weeks.

UKPN, Winney Queech reinstatement and sheet piles repair: We have informed UKPN of our current position and expectations with regards to various matters and eagerly await their response with regards to these. Updates will be published when available.

Chelmondiston Recycling Centre

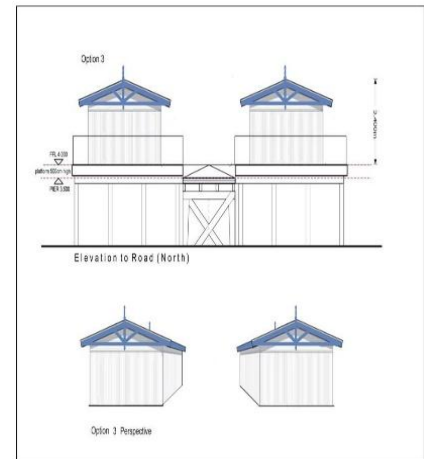
In a similar way, some of the external funding for this facility has ended, therefore the Parish Council has agreed to support Chelmondiston PC in this joint venture and fund it by £750.00 this year to ensure it is not lost.

A similar contribution is expected annually in subsequent years.



Shotley Pier

Although the previously refused planning application is going through the appeal process, it appears that new plans (right), which take into account not just community and shareholder's feedback, but also the views contained within the initial grounds for refusal, have now been approved by the Directors and are imminently going to be submitted to Babergh DC.



Shotley Peninsula Shoreline CIC: The group valiantly working towards solutions for the Shotley foreshore/coastal erosion issues is progressing with their work. In order to ascertain the scope of what is needed, the group is considering having a full survey carried out. This will cost in excess of £11,000 and although the Parish Council is fully supportive of the group's efforts, it has to have regard for its responsibilities for the whole of Shotley and its financial limitations. Members approved a contribution of £2,000 towards the cost of the survey, which is in addition to funds already granted towards their setting up costs, not to mention the assurance of continued partnership working.

A meeting with the statutory bodies (SCC, BDC, NE, EA, etc), who pledged their support to the Parish Council when it asked for their help last year, is being organised and it is hoped additional funding will be forthcoming.

As parishioners will by now be fully aware, due to legal constraints the Parish Council is not able to lead this project and is limited to the amount it can spend on it.

The Parish Council does not hold any remaining funds raised in previous phases of the project, as the project went considerably over budget. The Parish Council had to absorb that overspend which resulted in depleted reserves, which we have been trying to re-build with considerable effort in the last few years.

Finances: The Parish Council approved an increase of 2.5% (year on year) on its precept for 2019/2020. This will represent an additional amount of £1,470, or in real terms, an additional £4.07 per year on your council tax bill (Parish Council element) from £78.26 to £82.33. Our current earmarked reserves of £25,000, which we have been saving since 2006, are for the provision of new play equipment at Lloyd Road and Kingsland.

Marina developments: In answer to your queries regarding the new development on the foreshore side of King Edward VII Drive, although the siting and scale of the new dwellings may have come as a surprise to some of our residents and visitors, please rest assured that the planning process was dully followed a number of years ago. The original approved application is for 150 dwellings.

Recent applications refer only to minor changes and discharge of previous conditions. Should you have any additional enquiries, may we please ask that you refer them to the Babergh DC Planning Department.

And finally: With the ever increasing amount of budget cuts by all our statutory bodies, Parish Councils are now, more than ever, relied upon for a variety of things....and with the smallest of all budgets!

Local authorities have advised us they will not cut our verges, maintain our hedges, trim our trees, replace or repair our street signs, maintain our footpaths or replace our street furniture. If we want it done, we will have to do it ourselves!

With such uncertainties, not to mention Brexit and the Government's resulting financial position, this Parish Council must act prudently in order to have any chance of meeting its expectations, whilst continuing to be able to support local projects and organisations.

We try our best to keep the village in a good state of repair and looking as lovely as usual. Sometimes this is difficult, as we obviously work on a very tight budget and we will not always please every parishioner with our decisions. But we can give you our assurance that we will always do our best and welcome any feedback you may have that will help us with our endeavours.

We couldn't do it without you and all our remarkable volunteers, so thank you!

Shotley is a wonderful place to live, as I am sure you agree, and we can all help keep it that way.

Our next Parish Council meeting has been put back to February 28th as the Village Hall will be in use for another event. We look forward to seeing you there.

Shotley Parish Council